

HANECO LIGHTING LED INSTALLATION GUIDE

VISTA^{EVO}

Thanks for choosing our VISTA^{EVO} batten products.
We strongly recommend that you read this manual carefully before installation.

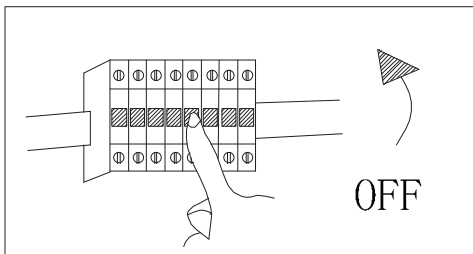
Model	Colour	Power	Operating Temp.	Frequency	IP Rating	CCT
VISTA-EV06	White	Min. 10W, Max. 20W	Ta -20°C ~ 45°C	220-240Vac, 50/60Hz	IP20	4000 / 5000 / 5700 K
VISTA-EV06-BK	Black	Min. 10W, Max. 20W				
VISTA-EV12	White	Min. 20W, Max. 40W				
VISTA-EV12-BK	Black	Min. 20W, Max. 40W				
VISTA-EV12-MS	White	Min. 18W, Max. 36W				
VISTA-EV12-MS-BK	Black	Min. 18W, Max. 36W				
VISTA-EV12-EM-MS	White	Min. 21W, Max. 39W				
VISTA-EV12-EM-MS-BK	Black	Min. 21W, Max. 39W				
VISTA-EV06-EM	White	23W				
VISTA-EV06-EM-BK	Black	23W				
VISTA-EV12-EM	White	Min. 23W, Max. 43W				
VISTA-EV12-EM-BK	Black	Min. 23W, Max. 43W				

WARNING

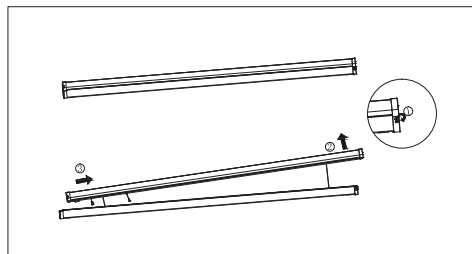
- The luminaire must be installed by a licensed/qualified electrician in accordance with local wiring and relevant Australia standard.
- Ensure to disconnect mains supply before conducting any installation and maintenance the luminaire.
- Ensure input voltage conforms to the voltage range of product.
- Ensure all the wiring is correct and secured before connecting mains supply to the luminaire.
- Warranty is void if product is not installed according to the instructions.
- The light source contained in this luminaire shall only be replaced by the manufacturer or his service agent or a similar qualified person.

Note: Product technical information and specification may change over time without prior notice. For latest information, please contact our customer service or visit our website www.haneco.com.au

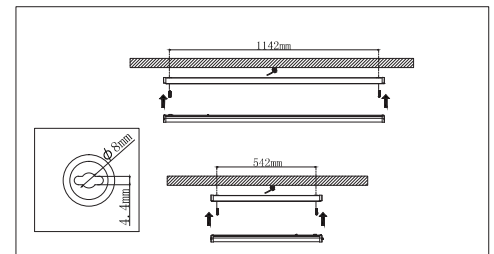
Installation Instructions



1. Switch off main power supply



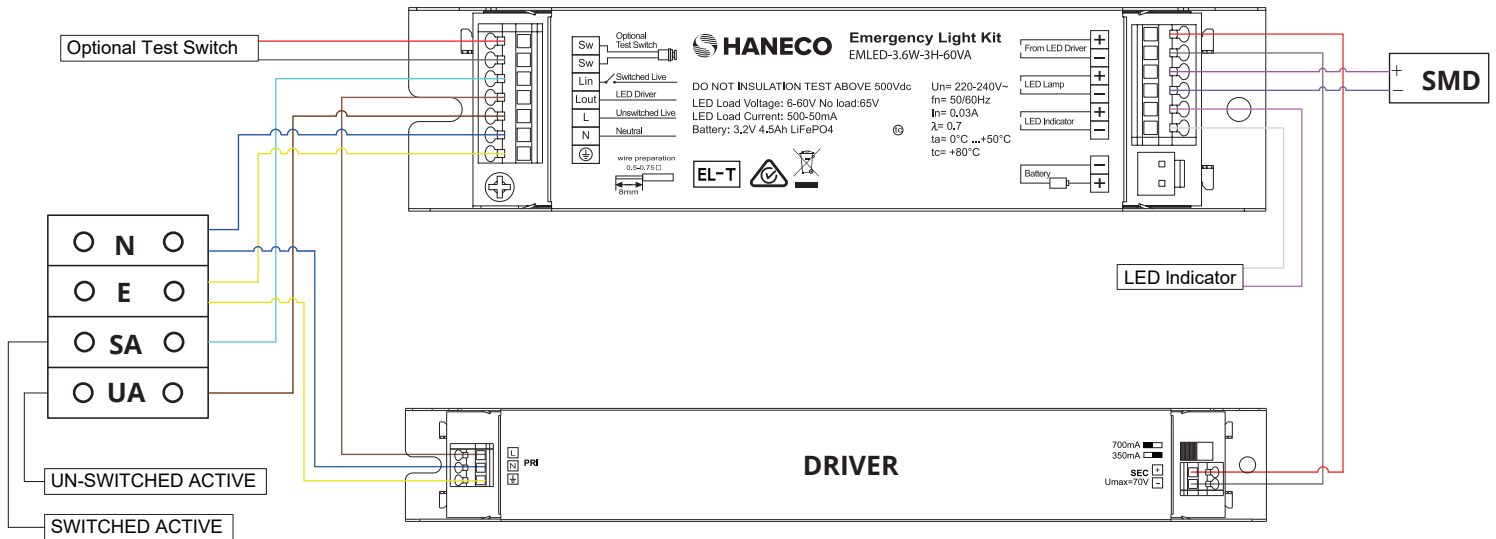
2. Remove the diffuser as shown



3. Drill the hole

EMERGENCY WIRING DIAGRAM

WIRING DIAGRAM



Wiring for Maintained Mode:

Switched Supply: Connect Switched Mains Supply Active from On/Off Switch to Switched Active terminal (Sw.A)

Maintained Supply : Connect Hard Mains Supply Active to Un-Switched Active terminal (Un.Sw.A).

For 24/7 Operation (no switch in circuit) Connect Un-Switched Mains Supply Active to Un-Switched Active (Un.Sw.A) and loop into Switched Active terminal(Sw.A).

Wiring for Non Maintained Mode:

Connect Hard Mains Supply Active to Un-Switched Active terminal (Un.Sw.A) only.

Maintained Mode definition

Normal Mains Supply LED Luminaire is Illuminated during Switching On conditions and at loss of Mains Supply Power Failure LED remains on under Battery Backup supply.

Non-Maintained Mode definition

LED Luminaire is not illuminated during Normal Mains Supply conditions, only at loss of Mains Supply Power Failure LED comes on under Battery Backup Supply.

For Full Battery Charging Conditions, the Emergency Luminaire must have Continuous Charging of Battery Pack for at least 16 Hours to allow sufficient Battery Backup Supply conditions for minimum Illumination requirements in accordance to AS2293 guidelines.

Product Code: **VISTA-EV06-EM**
VISTA-EV06-EM-BK
VISTA-EV12-EM
VISTA-EV12-EM-BK
VISTA-EV12-EM-MS
VISTA-EV12-EM-MS-BK

EMERGENCY WIRING DIAGRAM

Self Test Function:

Key operation	Functional Description
Functional Testing	1. Initiate a 5 seconds function test when press test switch
Duration Test	1. Initiate a 90 min duration test after new battery been full charged (16 hours) 2. Auto-run a 90 min duration test every 26 weeks 3. Auto-run a 90 min duration test every year

Status Indication:

LED indication	Commentary	Notes
Permanent green	System OK	AC mode
Fast flashing yellow (1s on–1s off)	Function test (press test switch)	Detection of emergency switching function
Slow flashing yellow (4 s on – 1 s off)	Duration test (Initially check, half yearly check, annually check)	Emergency time 90 min
Slow flashing yellow (4 s on – 1 s off)	Half yearly check, annually check OK	KEEP 5 days Indicator light prompt
Fast flashing yellow (0.5 s on – 0.5 s off)	Luminaire failure	Open circuit / short circuit /LED failure *1
Fast flashing yellow (0.5 s on – 0.5 s off)	Charging failure, battery failure battery under voltage	Battery under voltage, battery failed the test / battery is defect / Incorrect battery voltage *2
Green and red off	DC mode	Battery operation (emergency mode)

**1. If the intelligent emergency controller runs the self checking program and detects the load fault (LED), then the yellow light slow flashing will light up and the output will stop. It needs to judge the fault ,repair the load, and press the test, TEST 5S,restore normal.*

**2. If the intelligent emergency controller runs the self checking program and detects the load fault (LED), then the yellow light slow flashing will light up and the output will stop. It needs to judge the fault ,pull and plug Battery, restore normal.*

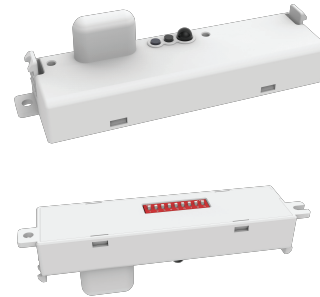
INTELLISENSOR USER MANUAL

Thank you for choosing one of our Intellisensor LED battens.
We strongly recommend that you read this user guide carefully before installation.

Sensor Function

The Haneco Intellisensor offers smart, auto dimming technology for a more sustainable standby lighting application. It includes a built-in microwave module, daylight sensor, 12V DC input and PWM dimming signal output.

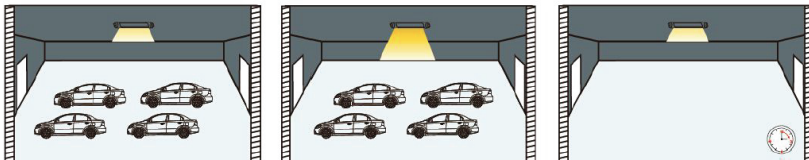
All smart functionality parameters can be set using the DIP switches to give you total control over your luminaires in order to meet all requirements.



Function	Configurable Settings	Default Setting
Hold Time	Automatic full illumination up to 30 minutes (5s/3s/3min/10min)	3 minutes
Stand-by period	Automatically dimmed standby mode (0s/1min/10min/+∞)	10 minutes
Standby Dim Level	Adjustable to 2 light levels (20/30%) to suit your security/safety requirements	20%
Daylight Threshold	Save energy during the day with 4 daylight threshold settings: (15Lux/50Lux/150Lux/Disable)	50Lux
Detection Sensitivity	Adjustable sensitivity with 4 settings (100/75/50/25%)” up to 5 metres	100%

2-Step Dimming Function

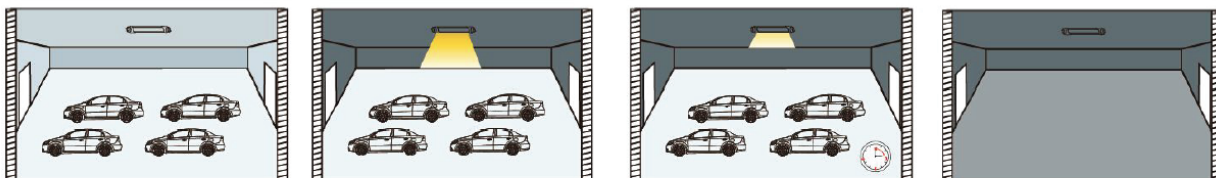
Stand-by period is set to “+∞”, daylight sensor is set to “Disable”, other sensor parameters can be set for actual needs.



- 1 If there is no motion detected, the light will be remained at a low light level all the time.
- 2 When motion is detected, the sensor will switch on the light to 100% brightness
- 3 After elapse of hold time, the sensor dims the light at the present low light level if no motion is detected.

3-Step Dimming Function

Stand-by period is set to “1min/10min”, daylight sensor is set to “15Lux/50Lux/150Lux”, other sensor parameters can be set for actual needs.

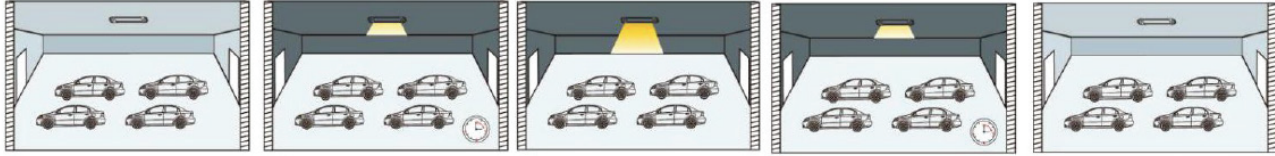


- 1 With sufficient ambient light, the light will not be switched on even if with motion signal.
- 2 With insufficient ambient light, the sensor switches on the light when motion is detected.
- 3 After elapse of hold time, the sensor dims the light at a low light level if no new motion is detected.
- 4 After elapse of standby period, the sensor switches off the light if no motion is detected in the detection zone.

INTELLISENSOR USER MANUAL

Daylight Priority Function

Stand-by period is set to “+∞”, daylight sensor set to “10/30/50lux”, other sensor parameters can be set for actual needs.



- 1 With sufficient ambient light, the light will not be switched on even if with motion signal.
- 2 When the ambient light is insufficient, the lamp will turn on and enter the low light state (standby level).
- 3 With insufficient ambient light, the lamp goes on full light when a mobile signal is detected.
- 4 After hold time, if no moving object is detected in the detection area, the lamp will automatically turn to standby brightness.
- 5 After standby time, if no moving object is detected in the detection area and the ambient light is sufficient, the lamp will turn off automatically.

Sensor Settings

Function	Detection Area			Hold Time			Daylight Sensor			Standby- by period			Stand-by Dim Level	
	1	2	Detection area	3	4	Hold time	5	6	Light control value	7	8	Standby period	9	Stand-by dim level
I	ON	ON	100%	ON	ON	5s	ON	ON	15Lux	ON	ON	0s	ON	20%
II	ON	-	75%	ON	-	30s	ON	-	50Lux	ON	-	1min	-	30%
III	-	ON	50%	-	ON	3min	-	ON	150Lux	-	ON	10min	-	-
IV	-	-	25%	-	-	10min	-	-	Disable	-	-	+∞	-	-

Product Code:
VISTA-EV12-MS
VISTA-EV12-MS-BK
VISTA-EV12-EM-MS
VISTA-EV12-EM-MS-BK